



GAILLARDE

KYO
habitation

habitationkyo.com | All rights reserved



GAILLARDE

KYO
habitation

53'-6" X 43-0"
2 135 sq.ft.
335 sq.ft. garage

1 level with garden level

3 bedrooms

2.5 bathrooms

- Open living area
 - Cathedral ceiling on the ground floor
 - Abundant windows
 - Spacious kitchen with large island
 - Wood fireplace
 - Large entrance with mudroom
 - Garage with access to the vestibule
-

Contact

855 768-8737 #1

info@habitationkyo.com

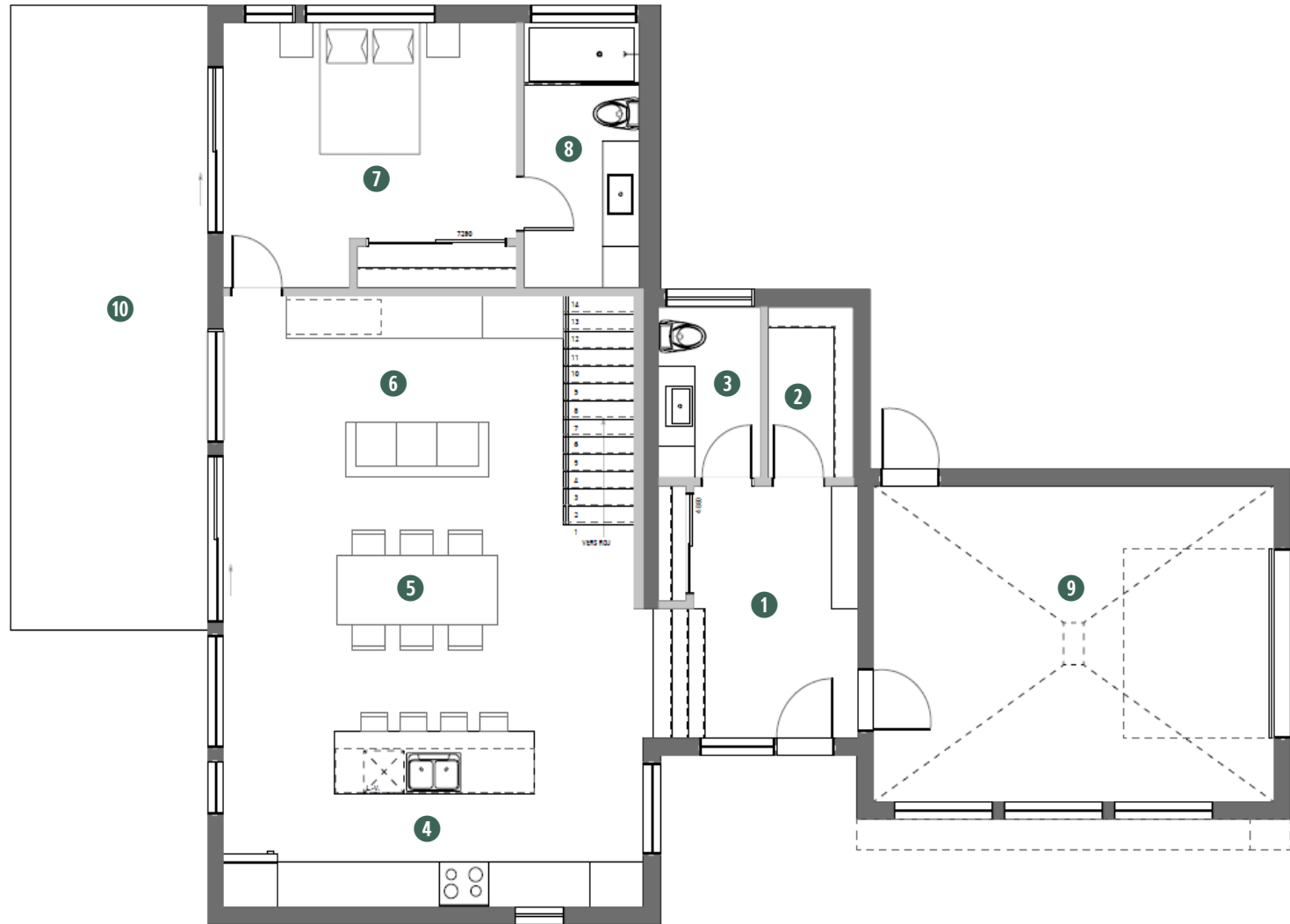
www.habitationkyo.com



GAILLARDE

Ground floor
1170 sq.ft.

- 1 Entrance : 8'-2" x 11'-11"
- 2 Mudroom : 4'-4" x 8'-2"
- 3 Bathroom : 5'-1" x 8'-1"
- 4 Kitchen : 21'-0" x 10'-8"
- 5 Dining room : 17'-0" x 8'-5"
- 6 Living room : 17'-0" x 9'-10"
- 7 Master bedroom : 14'-7" x 12'-7"
- 8 Bathroom : 5'-9" x 12'-7"
- 9 Garage : 20'-0" x 15'-0"
- 10 Terrace : 9'-10" x 29'-8"



GAILLARDE

Garden level
965 sq.ft.

- 11 Living room : 20'-6" x 11'-9"
- 12 Bathroom : 13'-3" x 7'-10"
- 13 Bedroom 1 : 13'-3" x 9'-1"
- 14 Bedroom 2 : 12'-9" x 9'-3"
- 15 Mechanical room : 6'-10" x 5'-9"
- 16 Terrace : 9'-10" x 29'-8"

